

## **Report of the Performance and Compliance Officer**

---

### **Subject: Well-being Objectives Performance Report – Progress against Priority Indicators/ Projects/ Work Programmes for the Period Ending 31<sup>st</sup> March 2024**

#### Introduction

This performance report sets out the Authority's performance against its four Well-being Objectives (Conservation, Climate, Connection and Communities) set out in our Corporate and Resources Plan 2023/24 – 2026/27. It outlines progress against priority indicators, projects, work programmes and internal development activities linked to activities identified in the Authority's Delivery Plans.

The following report presents the performance to date up to 31 March 2024 (end of financial year) and includes quarter 4 statistics for some measures. Please note figures will be reviewed prior to inclusion in the Authority's Annual Report on Meeting Well-being Objectives.

Please note:

- Additional supplementary performance data is captured on an annual basis and reported in the Authority's Annual Report on Meeting Well-being Objectives
- Partnerships contributing to Objectives are captured through Partnership Framework Monitoring with update report to be provided annually to NPA.
- A separate report is provided to Audit and Corporate Services Review Committee on Assurance Monitoring covering Compliance, Public and Statutory Duties and Corporate Improvement (this includes planning performance).
- An explanation of RAG status has been added to the end of this introduction report. However, this will be subject to further review and updated to reflect changes in the performance report.

Following recommendation from internal Audit, where there has been a change in intra year data reported following review and updates to source data, previously reported figures for the year are placed in [ ] underneath any updated figures. This will be taken forward for future reports where relevant. New classification has been applied to some data sets, and these will be subject to further review and checks. Initial review has resulted in some amendments to data captured in the graphs within the previous report.

Updates have been made to the performance reporting system to reflect data and information required for this new report.

### Conservation

In March the majority of management agreements were drawn up and signed by Connecting the Coast scheme grant recipients. 39 sites are covered by the scheme based on grant offer letters, 17 sites are receiving capital only grants and 22 sites are signed into 5 year management agreements. 23 of the sites are commercial farms. In addition to direct benefits for biodiversity, the capital grants have also provided a positive engagement tool for introducing conservation approaches to farmers/ landowners the Authority has previously had limited engagement with.

Some conservation activities have been affected by the wet weather during Q4.

In terms of supporting people to take action for nature 1,403 volunteer and social action days contributed to Nature Recovery in the Park and surrounding area in 2023/24. Pathways our supported volunteering project plays an important role in our conservation volunteering and funding has been received from HLF's Nature Networks fund that will see them take part in a range of conservation management projects at locations across the north of the County over the next 2 years. The grants will support 50% of Pathways activity during that time. This highlights the important role our volunteering and inclusion work and our nature recovery work can play together in supporting us to meet our Well-being Objectives.

### Climate

The Welsh Government Energy Service (WGES) report study was presented to Management Team in September with a prioritised work list, work has commenced in delivering the prioritised projects. Priority 1 was to install PV canopies at Llanion HQ and Oriol Y Parc car parks along with some additional PV feasibility work at our other sites.

The Authority has an EV minibus on order, supporting its decarbonisation of the fleet. We have seen a slight decrease in % Authority vehicles that are currently low emissions, this is down to review of data and improved understanding of our overall fleet.

In March the Authority was waiting on WRAP to confirm whether they could provide consultancy support for 2024/25 financial year.

Please note all sites have now provided a Waste Management Strategy compliant with the new Waste Separation requirements recorded on centrally held spreadsheet on Energy, Waste and Water Microsoft Team. Head of Decarbonisation and Decarbonisation Officer have been engaging with staff in Q4 over the changes.

Carbon Literacy Training session delivered to Members, Staff and PCF representatives in March.

The Climate Change Risk Assessment and Resilience Plan/ Report for Natural Heritage in PCNPA is behind and in Amber, a scoping meeting was held in January to further progress this work.

In terms of climate adaptation a tender went out for a review of Authority's charging car parks to look at enhancements and improvements to future proof the sites.

### Connection

The Authority has had 3,519 participants in its supported walking offer in 2023/24 with walks continuing in Q4 despite the West Wales Walking for Well-being Project ending in Q3. Interviews took place in March for the new Get Outdoors Coordinators (previously beach wheelchairs/ walkability.) A south post position was filled and due to start in May, however Authority is still looking to recruit a Welsh speaker for the North position.

It has also had 2,498 participants in 2023/24 through its early years work through the 1st 1000 Day project. Funding has been confirmed for the 1st 1000 Day project for the period April 2024 to March 2025. Funding for the year will allow the project to focus on a programme of activity with parents and pre-school children in Haverfordwest. This work will start in June and will be based at Fenton Primary school close to the town centre. The school has excellent grounds for outdoor activity and this will be used as the starting point for working with family groups.

There has been a 16.4% increase in concerns about PROW standards in 2023/24 compared to 2022/23. This reflects increase in concerns in Q3 linked to weather storms which resulted in surface conditions deterioration and other path damage. Issue of impact of weather conditions continued into Q4 with continuous wet weather generating an increase in muddy, slippery conditions on Coast Path. Sometime made worst due to the presence of stock. While for IROW the majority of reports in Q4 were in relation to storm damage which have brought down a number of trees. The impact of this is reflected in the PROW countryside management team cutting and maintenance work programme that saw 28 tasks completed in Q4 related to trees.

The Carew Castle Access Project is in Amber and is still in the initial planning stage. Once plans are finalised they will be submitted for relevant consents.

### Communities

Work relating to regenerative tourism and what it means for the Authority and its activities is now underway. The Summer/ Seasonal Ranger Role has been reviewed to align it to the regenerative tourism teams objectives, with role to be focussed on engaging people around the Park with the ability to generate income from activities provided as well as educating and advising on enjoying the National Park safely.

Oriel y Parc saw a 12.6% increase in visitors in 2023/24 compared to 2022/23, with the Lost Words exhibition having a positive impact on gallery visitor numbers with a 74.76% increase on 2022/23. Castell Henllys saw a 13.7% increase in visitors

compared to 2022/23. Carew saw a slight 1.66% decrease compared to 2022/23, however visitor figures remain above pre covid visitor levels in 2018/19.

In March Bannau Brycheiniog - Brecon Beacons - National Park Youth Wardens hosted the joint Next Gen/BBNPA Youth Wardens Residential partly funded through a grant via NPUK from Amex aimed at developing the skills of the young people involved.

Timeline for review of the National Park Management Plan was approved by the Authority at December NPA and special qualities online survey was open during March.

Explanation of RAG Status (Due to be reviewed)

RAG	What it means
Red	<p>Close monitoring and/or significant action required.</p> <p>This would normally be triggered by any combination of the following:</p> <ul style="list-style-type: none"> <li>• <b>Measures:</b> Not meeting the target or set to miss the target by a significant amount.</li> <li>• <b>Projects/ Project Development:</b> <ul style="list-style-type: none"> <li>○ Significant issues with the project e.g. project hasn't started within expected timescales, delays against critical milestones, failure to achieve project outcomes, significant challenges to operational delivery and issues with budget profiling. Action progress should be noted as Behind.</li> <li>○ If project is on hold/ no aspect of the project can be delivered and risk project associated with has increased because of inaction. Action progress should be noted as On Hold.</li> <li>○ If project is on track but there are future funding concerns. Action progress should be noted as On Track, however an explanation of Red rating regarding funding concerns should be included in the comments section.</li> </ul> </li> <li>• <b>Ways of Working:</b> <ul style="list-style-type: none"> <li>○ Significant delays with progressing ways of working activities. Critical activities, milestones and outcomes not being achieved. Lack of progress raises compliance concerns. Action progress should be noted as Behind.</li> <li>○ If activity is on hold and risks have increased because of inaction. Action progress should be noted as On Hold.</li> </ul> </li> </ul>
Amber	<p>Light touch monitoring required and/or some action should be carried out to prevent movement to Red status or to ensure progress to Green status.</p> <p>This would normally be triggered by any combination of the following:</p> <ul style="list-style-type: none"> <li>• <b>Measures:</b> Performance is currently not meeting the target or set to miss the target by a narrow margin.</li> <li>• <b>Projects/ Project Development:</b></li> </ul>

	<ul style="list-style-type: none"> <li>○ Minor or initial concerns around project performance and delivery e.g. some slippage in terms of timescales, initial concerns around progress towards project milestones, outcomes, operational delivery and budget profiling. Action progress should be noted as Behind.</li> <li>○ For actions previously in red, where measures have been put in place to address any previous major concerns and are being acted upon. Action progress should be noted as Behind.</li> <li>○ If project is on hold/ no aspect of the project can be delivered but there are limited risks because of inaction. Action progress should be noted as On Hold.</li> <li>○ If project is on track but there are some future funding concerns. Action progress should be noted as On Track, however an explanation of Amber rating regarding funding concerns should be included in the comments section.</li> <li>● <b>Ways of Working:</b> <ul style="list-style-type: none"> <li>○ Minor delays with progressing ways of working activities. Some activities, milestones and outcomes not being achieved. Action progress should be noted as Behind.</li> <li>○ For actions previously in red, where measures have been put in place to address any previous major concerns and are being acted upon. Action progress should be noted as Behind.</li> <li>○ If activity is on hold but there are limited risks because of inaction. Action progress should be noted as On Hold.</li> </ul> </li> </ul>
Green	<p>No action required.</p> <p>This would normally be triggered by any combination of the following:</p> <ul style="list-style-type: none"> <li>● <b>Measures:</b> Performance is currently meeting the target.</li> <li>● <b>Projects/ Project Development:</b> Everything is functioning as expected, project performance is as planned with the project meeting milestones and outcomes. Action progress should be noted as On Track. If project milestones have been met ahead of schedule then action progress should be noted as Ahead.</li> <li>● <b>Ways of Working:</b> Progress is being made against areas for action within reasonable timescales. Milestones and Outcomes are being achieved. Action progress should be noted as On Track.</li> </ul>
<p><b>Performance for some Measures are based on across year benchmarking and trend considerations, performance columns on previous year performance should be used to assess performance in these areas.</b></p>	

**RECOMMENDATION:**

**Members are requested to RECEIVE and COMMENT on the Performance Report.**

*(For further information contact Mair Thomas, Performance and Compliance Officer)*



## Performance Reporting Report – Progress against Priority Indicators/ Projects / Work Programmes

### Well-being Objectives: Performance Report – Progress against Priority Indicators/ Projects/ Work Programmes

- Please note additional supplementary performance data is captured on an annual basis.
- Partnership activities contributing to Objectives are captured through Partnership Framework Monitoring.

#### Well-being Objective Conservation

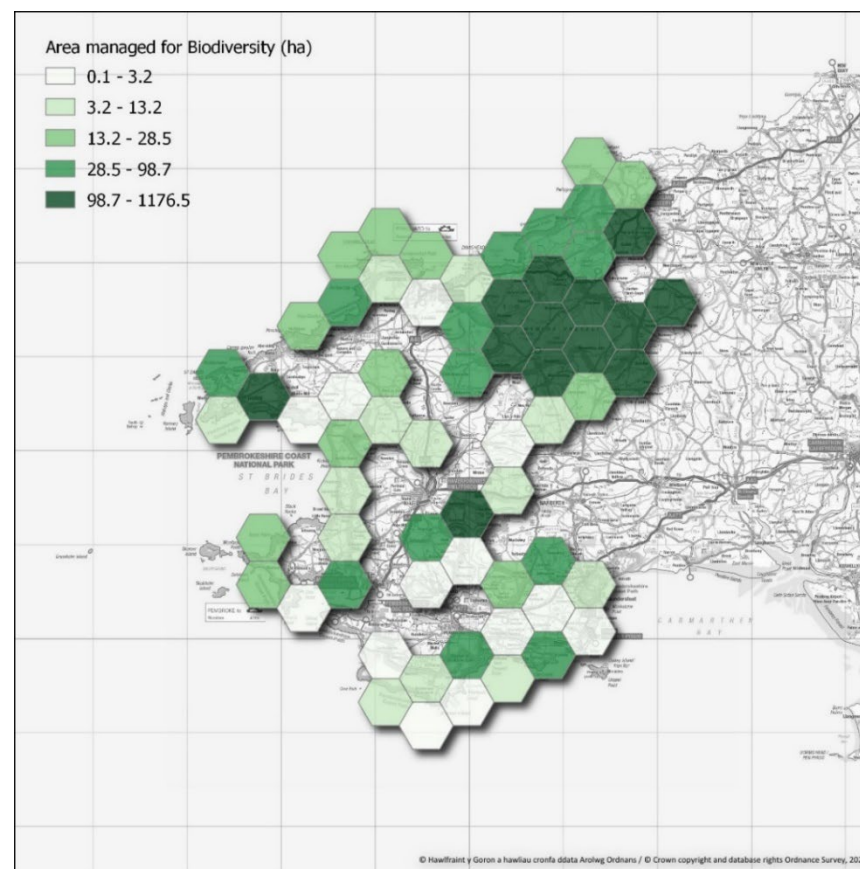
##### 1. Increase in extent of effective protection and management for nature recovery happening in the Park area (focused on Authority intervention and management regimes). (S6)

DP Ref	Indicator	Current Year: Q4 2023/24	Comment	Positive Land Carbon Outcome Expected
NR1	Conserving the Park Scheme: Hectares - area under conservation management	6,029.78 (Baseline)	Limited change expected between quarters. Includes Formal Management Agreements working with landowners and PCNPA estate.	Yes – Meadow and Hedgerow creation related activities.
<b>Project Specific Indicators for Connecting the Coast Scheme</b>				
<b>Note:</b> 39 sites are covered by the scheme. 17 sites are receiving capital-only grants. 22 sites are signed into 5 year management agreement payments. 23 of the sites are commercial farms.				
NR1	Connecting the Coast Scheme: Hectares - area under 5 year conservation management agreements (based on grant offers to land owners as of 31/2/24)	188.49	Coastal slopes – 85.72ha. Hay meadow – 43.55ha. Permanent grazed pasture: 47.42ha. Arable Margins: 2.7ha. Other habitats: 9.1ha.	Yes – Meadow/ Hedgerow creation and tree planting related activities.
NR1	Connecting the Coast Scheme: Hectares - Capital grants for Basic Herbal Lay and Enhanced Herbal Lay (based on grant offers to land owners as of 31/2/24)	147.68	In addition to direct benefits for biodiversity, the capital grants have also provided a positive	

## Performance Reporting Report – Progress against Priority Indicators/ Projects / Work Programmes

NR1	Connecting the Coast Scheme: Meters - Capital grants for fencing to support conservation (based on grant offers to land owners as of 31/2/24)	18,484.48	engagement tool for introducing conservation approaches to farmers/ landowners the Authority has previously had limited engagement with. In addition capital grants have included conservation work for 10 days scrub clearance, 8 ponds, 13 special projects, 39 gates, 8 water troughs and 3 interpretation.	
NR1	Connecting the Coast Scheme: Meters - Capital grants for hedgerows (based on grant offers to land owners as of 31/2/24)	2,621		
NR1	Connecting the Coast Scheme: # Trees - Capital grants for Field Trees and Woodland Planting (based on grant offers to land owners as of 31/2/24)	986		
<b>Please note additional data is captured on an annual basis.</b>				

**Figure 1: Area managed for Biodiversity (ha) area –**  
 The map includes sites which are being managed for nature conservation with help from Pembrokeshire Coast National Park Authority.  
 This includes management agreements, practical works, grants towards habitat creation, grazing services and advice. On common land, firebreak cutting and habitat restoration are carried out in consultation with graziers. Area for each individual hexagonal grid is 2,165ha.





## Performance Reporting Report – Progress against Priority Indicators/ Projects / Work Programmes

DP Ref	Priority Project/ Work Programme 2023/24	RAG Previous Period: Feb 2023/24	RAG Current Period: March 2023/24	Trend	Progress Commentary	Positive Land Carbon Outcome Expected
NR1	Coastal Management Scheme: SLSP – Wild Coast, Wild Park Nature Recovery Project	Green	Green	→	<b>Progress Status:</b> In Progress/ On Track The majority of management agreements were drawn up and signed by grant recipients which is a big milestone for the project. The Native Oyster Project is progressing well.	Yes
NR1	Peatland Action Programme	Green	Green	→	<b>Progress Status:</b> In Progress/ On Track Vegetation cutting was completed on Waun Fawr SSSI. Firebreaks were cut on Rhos Hescwm. The proposed fencing at Felin Wern could not be done because of the wet ground, so permission was given for us to use the remaining budget to buy No Fence collars for cattle to graze Gors Fawr (this had been proposed for the 24-25 financial year). The fencing will be done as soon as conditions are dry enough this spring. First year of the project completed, involving achieving specific work targets, mapping them and claiming for the works by end of March 2024.	Yes
NR1	Stitch in Time (Nature Networks Fund Project) - Delivery of Invasive Species Work programme	Green	Green	→	<b>Progress Status:</b> In Progress/ On Track Main activities during March included: working with contractors across Castlemartin Corse and St Davids catchment finishing off access route cutting. Wetness of sites has meant machines are not suitable and brushcutters were the only option. Presented to 22 members of the Friends of the National Park group in Llanion on the project and invasive species. Liaised with the	

## Performance Reporting Report – Progress against Priority Indicators/ Projects / Work Programmes

					West Wales Rivers Trust on partnership working in the Wern catchment and providing a best practice event and follow up work party.	
NR1	Traditional Boundary Scheme	Green	Green	→	<b>Progress Status:</b> In Progress/ On Track In the Winter of 2023/24 55 expressions of interest were received out of those 17 agreements have been offered to aid the restoration of hedgerows within the Park. By the end of January 3 projects had been completed with 290m of planting and 580m of protective fencing put in place. No claims submitted in March due to wet weather.	Yes
NR1	Commons Resilience	Green	Green	→	<b>Progress Status:</b> In Progress/ On Track A Successful Grant application was granted by the Heritage Lottery for the Nature Networks Fund Project. On the Common land the aims will be specific boundary fencing, habitat restoration and the creating of fire breaks. Planning is underway and the fencing will be the first part of the Project, due to be completed before the Summer.	
<b>DP Ref</b>	<b>Internal Development Priority Activity 2023/24</b>	<b>RAG Previous Period: Feb 2023/24</b>	<b>RAG Current Period: March 2023/24</b>	<b>Trend</b>	<b>Progress Commentary</b>	
NR2	Identification of Nature Recovery indicators for the future to help measure impact and target interventions	Green	Green	→	<b>Progress Status:</b> In Progress/ On Track Option are being explored, and further detailed work will take place over the coming year.	

## Connection – PNCPA Impact Case Study

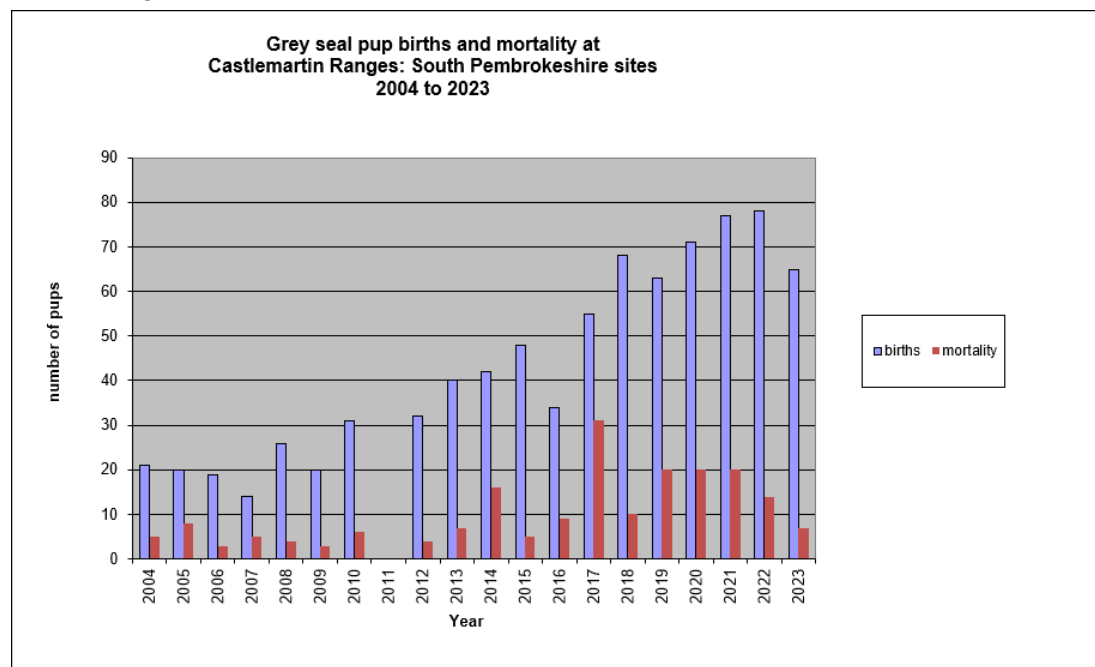
### Monitoring seal pup births

**What issue was addressed:** Monitoring the birth of seal pups across Castlemartin Range. Providing information to feed into wider assessments.

**What was achieved:** The Castlemartin ranger started monitoring the seal pup births in 2004 and has achieved almost a 20 year dataset. This data will be used by NRW for the Pembrokeshire SAC seal condition assessment being completed this spring. The data was also pivotal in DIO's HRA for recent large scale military training exercises.

Seal pup births have generally been on the increase annually.

In 2022, 24/7 live cameras were installed to film the seals on two beaches during a large scale military exercise, to assess what impact, if any the training had on them.



## Performance Reporting Report – Progress against Priority Indicators/ Projects / Work Programmes

**Those involved:** Castlemartin Ranger and more recently a seasonal ranger and in 2023 a volunteer helped.

**Timescale:** It is an ongoing annual project which started officially in 2004.

**Longer Term Impact:** All the data collected is sent to NRW to be included in their 'Skomer and Marloes MCZ' evaluation.

### 2. Evidence of embedding nature recovery in how we operate with focus on access and heritage (S6)

DP Ref	Indicator	Previous Year ytd: Q4 2022/23	Current Year ytd: Q4 2023/24	Trend	Comment
NR3	Coast Path/ IROW managed for NR: # pollinator/ habitat improvement CSM work programme tasks completed	404	128	↓	Includes Ant Hill, Bee Bank and Scalloped Edges Work Programme Tasks. There has been a 68.3% decrease compared to 2022/23 however this reflects that the Authority had specific pollinator warden for part of 2022/23. The activity is now mainstreamed into wider ROW work programme.

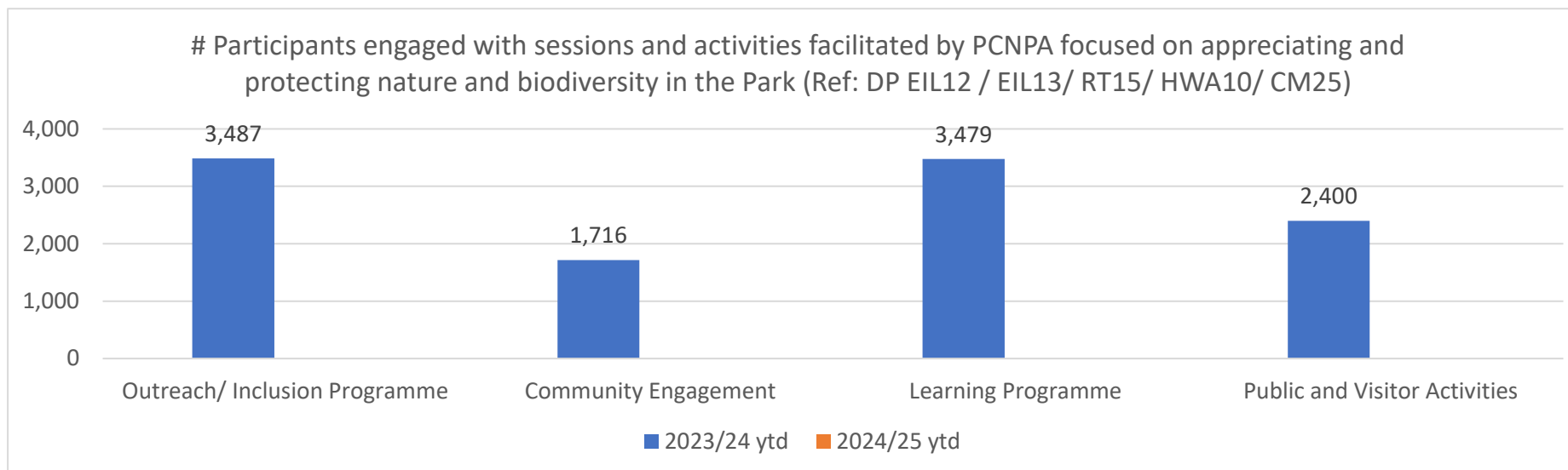
DP Ref	Priority Project/ Work Programme 2023/24	RAG Previous Period: Feb 2023/24	RAG Current Period: March 2023/24	Trend	Progress Commentary
NR2	Delivery of work programme to manage ash die back on our estate.	Green	Green	→	<b>Progress Status:</b> In Progress/ On Track Trees with ash-die back disease identified for felling works have been felled at relevant sites.
DP Ref	Internal Development Priority Activity 2023/24	RAG Previous Period: Feb 2023/24	RAG Current Period: March 2023/24	Trend	Progress Commentary
NR1	Creation of Conservation Management Plans for own sites to be exemplars for nature recovery	Green	Green	→	<b>Progress Status:</b> In Progress/ On Track Options are being explored.
NR3	Embedding approaches to manage Coast Path/ IROW for Nature Recovery.	Green	Green	→	<b>Progress Status:</b> In Progress/ On Track Work is ongoing and will be explored further in 2024/25.

## Performance Reporting Report – Progress against Priority Indicators/ Projects / Work Programmes

NR3	Enhancing nature recovery opportunities aligned to community archaeology/ heritage interventions.	Green	Green	→	<b>Progress Status:</b> In Progress/ On Track. During March, scrub clearance was carried out at three scheduled monuments in partnership with volunteers including Tower Point Rath (St Brides), Newport (Pembs) Castle and a medieval leat (St Davids).
-----	---	-------	-------	---	--

### 3. Evidence of supporting a wide range of people to participate in taking action for nature (S6)

DP Ref	Indicator	Previous Year ytd: Q4 2022/23	Current Year ytd: Q4 2023/24	Comment
NR3/ EIL13	Volunteer and social action days contributing to Nature Recovery in the Park and surrounding area	1,357	1,403	Pathways our supported volunteering project plays an important role in our conservation volunteering and funding has been received from HLF's Nature Networks fund that will see them take part in a range of conservation management projects at locations across the north of the County over the next 2 years.



## Performance Reporting Report – Progress against Priority Indicators/ Projects / Work Programmes

### Well-being Objective Climate

#### 4. Evidence of activities supporting decrease in emissions from Authority sources (or removals).

DP Ref	Reduction activities across Net Zero reporting areas	RAG Previous Period: Feb 2023/24	RAG Current Period: March 2023/24	Trend	Progress Commentary	2022/23 Emissions KgCO2e
D5	Buildings (Energy / Water Use) (including implementation of building feasibility studies recommendations on reducing emissions)	Green	Green	→	<b>Progress Status:</b> In Progress/ On Track Implementation of WGES energy study of PCNPA buildings - Further to prioritisation of actions in the report it was agreed by Leadership team. Priority 1 was to install PV canopies at Llanion HQ and Oriol Y Parc car parks along with some additional PV feasibility work at our other sites. A consultant has been appointed and work commenced including a site visit in order that a report is prepared for these proposals to outline potential specification, size, scope, cost etc.	108,575
D5	Fleet and Equipment (including development and implementation of Decarbonisation Plan for Fleet)	Green	Green	→	<b>Progress Status:</b> In Progress/ On Track EV Minibus ordered. Minibus breakdown and insurance audited to assure value and coverage. EV charging dashboard piloted to internal stakeholders, and reportable metric generation automated. ICE dashboard underway. <b>% Authority Vehicles that are currently low emission: 35.9% [42%]</b>	107,966

## Performance Reporting Report – Progress against Priority Indicators/ Projects / Work Programmes

D5	Business Travel	Green	Green	→	<b>Progress Status:</b> Not Started/ On Hold Not started yet.	15,267
D5	Commuting/ Homeworking	Green	Green	→	<b>Progress Status:</b> In Progress/ On Track Authority has in place a Home and Hybrid Working Policy, supporting home working where appropriate and supporting reductions in commuting related emissions. An improved Home Working model was explored for FY2023/24 WGNZ reporting.	C: 105,571 HW: 29,497 (Approx Totals)
D5	Supply Chain (including deep dive into procurement and implementation of recommendations )	Amber	Amber	→	<b>Progress Status:</b> Not Started/ On Hold On hold, pending confirmation of availability of WRAP for consultancy work. Confirmation expected after commencement of 24/25 financial year. Contingencies in case external support is not available discussed.	932,506 (Spend based)
D5	Waste (Including improved recording and implementation of circular economy principles where feasible)	Green	Amber	↓	<b>Progress Status:</b> In Progress/ Behind A majority (but not all) sites have reported a Waste Management strategy compliant with the new Waste Separation Requirements as of 2nd April. A robust package of support - including 10 workshops - has been delivered to assist sites in developing a compliance strategy. A pilot of Tier 3 Net Zero reporting has been implemented for three waste streams.	Currently captured via supply chain
D5 / NR1	Land Use - Emissions/ Removals (Including implementation of sequestration for nation project and management of	Green	Green	→	<b>Progress Status:</b> In Progress/ On Track Work is ongoing at Community Woodland Site (Pen Parcau)	Removals: -1,288,473 Emissions: 4,210

## Performance Reporting Report – Progress against Priority Indicators/ Projects / Work Programmes

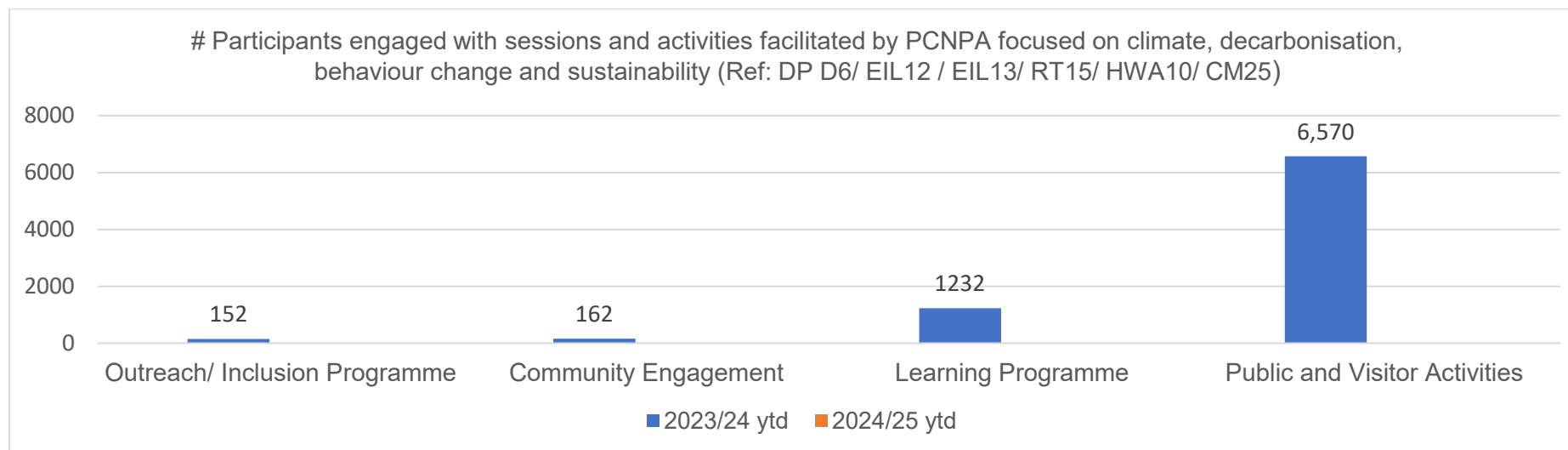
	land acquired for carbon storage/ nature recovery)				
D5/ SD21	Carbon Literacy Training/ Behaviour Change – Staff and Members	Green	Green	→	<b>Progress Status:</b> In Progress/ On Track Training from Cynnal 22/03/2024 for 17. Delivered to 14 - accreditation is pending 6x Members 3x Leaders 3x Employees 2x External (PCF)
<b>Overall impact will be monitored via annual carbon emissions submitted as part of Welsh Government Net Zero Reporting.</b>					

### 5. Evidence of supporting the Park on its pathway to becoming carbon neutral. Evidence of engaging with wider public to support behaviour change and understanding of climate change/ decarbonisation.

DP Ref	Indicator	Previous Year ytd: Q4 2022/23	Current Year ytd: Q4 2023/24	Trend Comment
D6	# SDF community decarbonisation projects completed [Project Specific Indicator]	11	10	Cumulative project completions since 2021/22: 29 New projects approved by Committee in 2023/24: 6.
D6	# Green agriculture (decarbonisation) schemes completed to date [Project Specific Indicator]	New Measure	7	
D6	# EV charging sessions at PCNPA charging points [Legacy Impact - Project Specific Indicator]	6,634	8,367	Across 17 PCNPA charging sites.
D6 / EIL13	Volunteer and social action days contributing to decarbonisation/ removals (including community tree planting activities and litter picks)	New Measure	574.5	Includes tree planting sessions with Ysgol Bro Preseli ,Ysgol Penrhyn Dewi, Milford Haven C P School and Coastlands School in Q4.
D6 / EIL13	# Trees Planted through Community Tree Planting Scheme [Project Specific Indicator]	1,182	194	A variety of native trees, including hawthorn, blackthorn, guelder rose, holly, rowan, crab apple, downy birch, wild cherry, sessile oak and walnut. Several apple trees grown from cuttings of trees in the heritage orchard at St Brides planted in community locations.



## Performance Reporting Report – Progress against Priority Indicators/ Projects / Work Programmes



DP Ref	Priority Project/ Work Programme 2023/24	RAG Previous Period: Feb 2023/24	RAG Current Period: March 2023/24	Trend	Progress Commentary	Positive Nature Recovery Outcome Expected
D6	Greening Agriculture – Working with dairy farmers to reduce carbon emissions (offsetting/ reduction measures)	Green	Green	→	<b>Progress Status:</b> In Progress/ On Track. Three projects completed in Q4.	Yes
D6 / NR4	Trees and Woodland Siting and Design Guidance	Green	Green	→	<b>Progress Status:</b> Complete/ On Track Tree and Woodland Guidance Pembrokeshire Coast National Park - A landscape sensitivity assessment to woodland creation was adopted by NPA 20/9/23. Proposed amendments to the SPG, arising	Yes

## Performance Reporting Report – Progress against Priority Indicators/ Projects / Work Programmes

					from consultation, were agreed by the NPA on 20th September. <a href="#">Document available on Authority website.</a>	
D6 / EIL13	Community Tree Planting Scheme	Green	Green	→	<b>Progress Status:</b> In Progress/ On Track Community tree planting projects this quarter have included a new hedge and 4 apple trees alongside the playing field in Roch, pupils at Ysgol Bro Preseli in Crymych planted trees in their school garden and Mathry and Brawdy communities gave trees out to local residents to plant in gardens. Rangers have revisited trees planted last year and replaced failed trees in two locations. No further planting activity done this month but preparations made for final planting day on 7th April.	Yes
D6/RT16	SLSP Sustainable Transport Study	Green	Green	→	<b>Progress Status:</b> In Progress/ On Track Internal meeting to progress work set for 11th April.	
D6	OYP E-Bike Scheme Pilot Implementation	Green	Green	→	<b>Progress Status:</b> In Progress/ On Track We continue to see more users signing up via the MOQO app but to date, no-one has paid to hire an e-bike. The hire price has reverted to the summer day-hire rate. The availability of e-bikes for hire at Oriely Parc is being promoted in the	

## Performance Reporting Report – Progress against Priority Indicators/ Projects / Work Programmes

					annual site leaflet and through an article included in Coast to Coast.	
D6 / NR1	Dark Skies Pembrokeshire Project	Green	Green	→	<p><b>Progress Status:</b> In Progress/ On Track.</p> <p>The retrofit changes to Llanion Park have been agreed and NHS Wales have been approached with an offer to include the North Building in the project, pending their approval the project can commence. The All Wales Dark Sky Working Group have agreed that a first draft of the Dark Sky Good Practise Guide should be completed by mid-summer. The Events and Activities Coordinator has begun researching Dark Sky events run by other AONBs with a view to integrating similar events into our own programme.</p>	Yes

### 6. Evidence of supporting the Park and Authority's Assets to be more resilient to the impacts of climate change

DP Ref	Priority Project/ Work Programme 2023/24	RAG Previous Period: Feb 2023/24	RAG Current Period: March 2023/24	Trend	Progress Commentary
AC8	Climate Change Risk Assessment and Resilience Plan/ Report for Natural Heritage in PCNPA (SLSP)	Green	Amber	↓	<b>Progress Status:</b> In Progress/ Behind Aiming to start soon. Meeting in January occurred to scope the plan. We have settled on operations assessments to narrow the scope.
AC8	Practical work and adapting of approaches for PROW to build	Green	Green	→	<b>Progress Status:</b> In Progress/ On Track Winter work program continues with furniture replacements, drainage clearance and gate

## Performance Reporting Report – Progress against Priority Indicators/ Projects / Work Programmes

	resilience including realignment activities.				<p>maintenance. Along with dealing with storm damage including fallen trees, surface damage and cliff falls. With assistance from a contractor the warden team have undertaken surface improvement to Marloes Beach access path and created passing bays to help facilitate the safe passage of both pedestrian and horses. The path had suffered wash out and scouring during heavy rainstorms, further works will also be undertaken to improve the drainage later in the year. A section of approximately 100 metres of cost path between St Brides and Musselwick has been realigned following a landslide which swept away the path. Following submission of bids for funding to NRW in December we received agreement to fund the management and 75% of maintenance costs for the Pembrokeshire Coast Path National Trail.</p>
Ref	Internal Development Priority Activity 2023/24	RAG Previous Period: Nov 2023/24	RAG Current Period: Dec 2023/24	Trend	Progress Commentary
AC9	Identifying opportunities when reviewing assets for future proofing (including leaseholders / concession providers).	Green	Green	→	<p><b>Progress Status:</b> In Progress/ On Track Review of charging car parks for enhancements and improvements that future proof sites and provide gateway to the NP tender out with Sell 2 Wales. Response due April.</p>

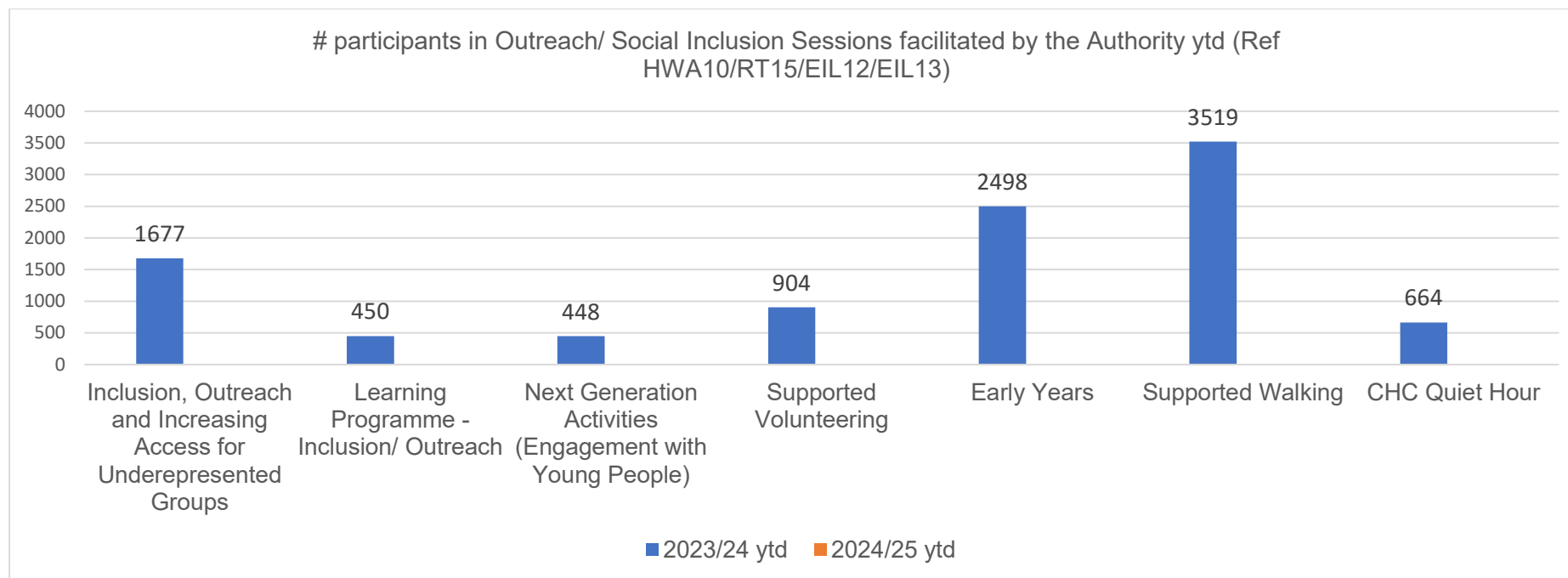
## Performance Reporting Report – Progress against Priority Indicators/ Projects / Work Programmes

### Well-being Objective Connection

**7. Evidence of helping address where possible the barriers that can impact on people from diverse backgrounds or facing socio-economic disadvantage from connecting with nature and heritage opportunities in the Park. Evidence of activities that use National Park to support health and Well-being.**

DP Ref	Indicator	Previous Year Ytd: Q4 2022/23	Current Year Ytd: Q4 2023/24	Trend	Comment
EIL13	# Volunteer and social action days	New Measure	3,518		Authority in process of moving to new recording system for volunteering – Better Impact.
HWA10	# Outreach/ Social Inclusion sessions supported by volunteers (including supported walking volunteer activity leaders and volunteer mentors)	New Measure	490		125 Walkability walks and 219 West Wales Walking for Health walks led and supported by volunteers.
HWA10	# Beach Wheelchair/ Mobility Equipment Bookings	399	399	→	During March the beach wheelchair equipment has been showcased at a number of roadshows across the county. Summer hosts are returning and equipment availability is increasing across the county.

## Performance Reporting Report – Progress against Priority Indicators/ Projects / Work Programmes



**Please Note:** The above figures reflect that the Authority currently has a number of externally funded projects that are supporting delivery of our outreach and social inclusion work, including: 1<sup>st</sup> 1000 Days, West Wales Walking for Well-being Project (this project ended in December 2023), Pathways Project, and Roots to Recovery (in partnership with MIND Pembrokeshire). The Authority is also involved in a partnership project with Visit Pembrokeshire called Open for All.

DP Ref	Priority Project/ Work Programme 2023/24	RAG Previous Period: Feb 2023/24	RAG Current Period: March 2023/24	Trend	Progress Commentary
HWA10	Traeth Mawr Access Improvement Work	Green	Green	→	<b>Progress Status:</b> In Progress/ On Track A <a href="#">paper</a> was presented and discussed at NPA which was approved. Work at site is progressing.
HWA10	West Wales Walking for Well-being [Final Year]	Green	Green	→	<b>Progress Status:</b> Complete/ On Track

## Performance Reporting Report – Progress against Priority Indicators/ Projects / Work Programmes

					<p>December was the last operational month of the West Wales Walking for Wellbeing project. The project had been active since 2019 with funding through the Healthy and Active Fund and more recently NRW's Resilient Communities Fund. During that time more than 2,000 walking sessions have been delivered across West Wales with an average of between 7-8 walkers on each walk. The project successfully targeted participants with pre-existing health conditions, older people and physically inactive individuals. Project evaluation and a summary of the project's outputs are available.</p>
HWA10	Pathways Project and project succession planning	Green	Green	→	<p><b>Progress Status:</b> In Progress/ On Track</p> <p>Volunteers were active at a range of locations including Tower Point, St Brides (scrub clearing/widen path/maintain view), Pebbles carpark, Newgale (hedge bank creation/restoration, edging car park plus litter pick), OYP, St Davids (Installing dead hedge preventing access on to roof of building) Nabs Head, St Brides (Removing gorse and burning around ancient monument.) In March, the Pathways team received confirmation of funding for a new project which will be delivered in partnership with the National Park Authority's Nature Recovery Team. Focused entirely in north Pembrokeshire and funded through the HLF's Nature Networks 3 programme, the work will involve Pathways volunteers in a range of conservation management projects at locations across the north of the County over the next 2 years. The grants will support 50% of the projects activity during that time.</p>

## Performance Reporting Report – Progress against Priority Indicators/ Projects / Work Programmes

HWA10	Roots to Recovery project (with Mind Pembrokeshire) and succession planning	Green	Green	→	<p><b>Progress Status:</b> In Progress/ On Track</p> <p>In March, the project's operational steering met to discuss the possible funding a 'Phase II' Roots to Recovery. Initial consultation work started in March with a member of NPA staff carrying out face to face interviews with existing and potential participants at Mind Pembroke Dock and in Pembroke. Roots to Recovery celebrated Disabled Access Day with a visit to Llys y Fran reservoir to look at access arrangements there and try out some of the easy access routes available at the site. The Pembroke based group visited the Brunel Trail near Neyland to look at their accessibility trail. Volunteer activity included work on an easy access footpath at St Ishmaels (return visit) and wildflower meadow creation adjacent to the ponds in Pembroke. The Roots to Recovery group was nominated for a Pembroke Town Council Civil Award in March.</p>
HWA10	First 1000 Days Pre School aged children project	Green	Green	→	<p><b>Progress Status:</b> In Progress/ On Track</p> <p>Funding has been confirmed for the 1st 1000 Day for the period April 2024 to March 2025. Funding for the year will allow the project to focus on a programme of activity with parents and pre-school children in Haverfordwest. This work will start in June and will be based at Fenton Primary school close to the town centre. The school has excellent grounds for outdoor activity and this will be used as the starting point for working with family groups. In March the First 1,000 team delivered an event at Colby Woodland Gardens for 5 local pre-school settings from Tavernspite, Templeton (Templetots), Tenby (Tiny Treasures, Tenby VC Primary School), Saundersfoot and Narberth. In total, 48 children took part accompanied by</p>



## Performance Reporting Report – Progress against Priority Indicators/ Projects / Work Programmes

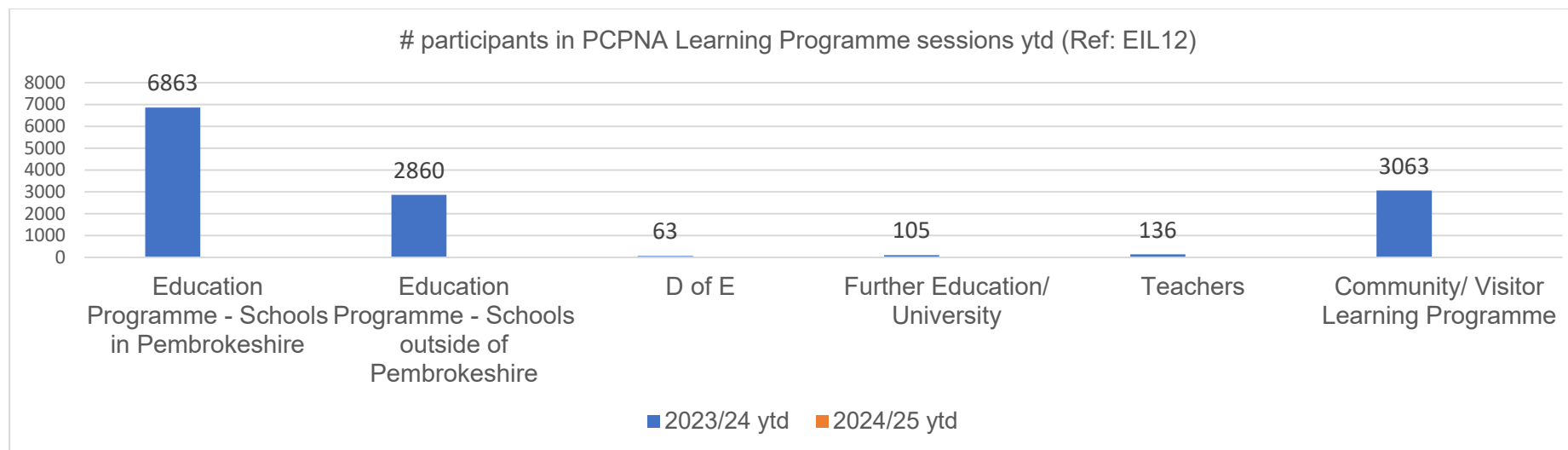
DP Ref	Internal Development Priority Activity 2023/24	RAG Previous Period: Feb 2023/24	RAG Current Period: March 2023/24	Trend	Progress Commentary
					parents, volunteers and nursery staff. The children took part in activities designed to explore the outdoors in spring.
HWA10	Development of Access to the Park and Outdoor Mobility Scheme	Green	Amber	↓	<b>Progress Status:</b> In Progress/ Behind Interviews took place in March for the new Get Outdoors Coordinators (previously beach wheelchairs/ walkability.) A south post position was filled and due to start in May. We are still looking to recruit a Welsh speaker for the north of the county post.
HWA10	Stakeholder mapping to inform development of future partnership projects and joint working with community support/link groups (focused on underrepresented groups/ those who face additional barriers)	Green	Green	→	<b>Progress Status:</b> In Progress/ On Track A team workshop was held in January to initiate this process, with detailed stakeholder analysis across the Engagement and Inclusion service area is in progress. Further work planned for Team workshop in April.
CM27	Development of a bank of photography and videography assets to showcase a Park for all	Green	Green	→	<b>Progress Status:</b> In Progress/ On Track First photography shoot scheduled at OyP for Easter holidays to begin the process of expanding our library of images. Further shoots planned for Carew and Castell Henllys.
EIL13	Development of annual participant survey to target regular participants in our volunteering, projects etc.	Green	Green	→	<b>Progress Status:</b> In Progress/ On Track A survey will be developed over the summer to trial in autumn 2024
EIL13	Review and identify new volunteering opportunities linked to Regenerative Tourism, Health, Well-being and Access, Nature	Green	Green	→	<b>Progress Status:</b> In Progress/ On Track Following on from individual line manager meetings, several new roles have been identified, in line with the volunteer action plan and PCNPA delivery plans. Due to capacity there will be a

## Performance Reporting Report – Progress against Priority Indicators/ Projects / Work Programmes

	Recovery, Decarbonisation and Adapting to Climate Change.				delay in advertising and recruiting for these roles: Oriel y Parc - gallery assistants, events assistants, storytellers. Castell Henllys - heritage, crafts, engagement and gardening volunteer roles. Health and Wellbeing - beach wheelchair and outdoor mobility roles identified, the volunteers will be managed by the new get outdoors officer. Nature recovery - agreement to continue with wildlife monitoring roles on NP land. No new roles linked to decarb or climate change.
HWA11	Review our health and well-being offer to identify future role of the Authority in response to all-Wales framework for social prescribing.	Green	Green	→	<b>Progress Status:</b> In Progress/ On Track Review of our social prescribing model needs to take place. Health and Well-being Officer has been invited to attend the GP and management meetings over the next few months to explain to them what social prescribing is. Contact received from Neuro Department in relation to potential of walk referral project.

## Performance Reporting Report – Progress against Priority Indicators/ Projects / Work Programmes

### 8. Evidence of supporting people of all ages to develop an understanding of the National Park



DP Ref	Priority Project/ Work Programme 2023/24	RAG Previous Period: Feb 2023/24	RAG Current Period: March 2023/24	Trend	Progress Commentary
EIL12	SLSP Designated Landscapes Education Project	Green	Green	→	<b>Progress Status:</b> In Progress/ On Track Work on some of the key elements of the Tirlun portal was completed in March including the 'key activities' designed to explore core topics associated with the designated landscapes and the introductory sections for each of the 8 landscape areas. Consultation with key stakeholders enabled a refined set of 'special qualities' for each of the DL's to be included on the portal.

## Performance Reporting Report – Progress against Priority Indicators/ Projects / Work Programmes

DP Ref	Internal Development Priority Activity 2023/24	RAG Previous Period: Feb 2023/24	RAG Current Period: March 2023/24	Trend	Progress Commentary
EIL12	Review of education/ learning offer to realign with our new priorities.	Green	Green	→	<b>Progress Status:</b> In Progress/ On Track This work has commenced organically as the Education team work with and support teams delivering education across the Park and review the activities offered. Any changes to the programme will be planned for the new academic year 2024/25.
EIL12/ RT15	Review of events offer across all Teams to take account of community and visitor learning opportunities.	Green	Green	→	<b>Progress Status:</b> In Progress/ Behind The Activities & Events Manager is currently in the operational stages of planning and promoting the delivery of events for the 2024 season. A lot of work has been undertaken in volunteer management, training and relationship building, ensuring the volunteer team are ready to deliver the upcoming events, including a pre-season briefing in March. The event strategy is in early stages of development.

### 9. Public Rights of Way network and heritage assets are maintained to enable people to continue to gain access to and enjoy the National Park

DP Ref	Indicator	Previous Year Ytd: Q4 2022/23	Current Year Ytd: Q4 2023/24	Trend	Comment
PL19	% PROW open and meeting quality standards	87.19	87.28	↑	0.1% increase on 2022/23.
PL19	Number of people using footpath from fixed counters (7 Coast Path / 4 Inland PROW)	222,048 [Q3 ytd data: 198,858]	- [Q3 ytd data: 209,891]		Awaiting Quarter 4 counter data from external contractor.

## Performance Reporting Report – Progress against Priority Indicators/ Projects / Work Programmes

PL19	# concerns about PROW standards	188	225	↑	16.4% increase compared to 2022/23 reflects in particular increase in concerns in Q3 linked to weather storms which resulted in surface conditions deterioration and other path damage. Issue of impact of weather conditions continued into Q4 with continuous wet weather generating an increase in muddy, slippery conditions on Coast Path. Sometime made worst due to the presence of stock. While for IROW the majority of reports in Q4 were in relation to storm damage which have brought down a number of trees.
PL19	# PROW CSM work programme cutting and maintenance tasks completed.	New Measure	1,986	N/A	28 tasks completed in Q4 related to trees which corresponds to above regarding IROW concerns linked to storm damage bringing down a number of trees.
PL19	# Site CSM work programme maintenance tasks completed	280	373	↑	Includes Adverse Weather Checks.
PL19	# Volunteer and social action days supporting heritage assets in park	New Measure	460.5		
PL19	# Volunteer and social action days supporting access work in Park	New Measure	349		Includes rangers facilitating practical access sessions to support Brynberian community path project with Pembrokeshire College and Ysgol y Preseli students.

DP Ref	Priority Project/ Work Programme 2023/24	RAG Previous Period: Feb 2023/24	RAG Current Period: March 2023/24	Trend	Progress Commentary
PL19/ EIL13	Safeguarding Ancient Monuments Scheme – monitoring and work programme for Park’s publicly accessible scheduled monuments	Green	Green	→	<b>Progress Status:</b> In Progress/ On Track During March, seventeen visits to monuments took place and two visits were assessed by the Community Archaeologist. Conservation work took place at four monuments and drone surveys were carried out at two.

## Performance Reporting Report – Progress against Priority Indicators/ Projects / Work Programmes

PL19	Carew Castle Access Project	Amber	Amber	→	<p><b>Progress Status:</b> In Progress/ Behind</p> <p>This project has been delayed and is still in the initial stages of planning. A brief has been written; an architect has been engaged. Detailed plans have been drawn up for the various elements of the project, including a number of phases. We are now waiting for additional high-level photos to be taken by our rope access specialists and a drone to enable amendments to the plans to be made. As soon as the plans are finalised, they will be submitted for the relevant consents.</p>
Please note additional data is captured on an annual basis for Safeguarding Monument Scheme.					

### Well-being Objective Communities

#### 10. Evidence of supporting visitors to make a positive contribution to local communities

DP Ref	Internal Development Priority Activity 2023/24	RAG Previous Period: Feb 2023/24	RAG Current Period: March 2023/24	Trend	Progress Commentary
RT14	Create key statement and set of principles on Regenerative Tourism to guide PCNPA's initial work in this area. Review how we measure success and develop revised set of indicators.	Green	Green	→	<p><b>Progress Status:</b> In Progress/ On Track</p> <p>An all Regenerative Tourism Staff meeting took place on 4th March at Carew Castle. Staff took part in workshops looking at the four areas of the draft strategy and contributed their ideas as to how the department could meet those goals / aims. The workshop brought up a lot of interesting ideas and suggestions, the teams were very engaged and their contributions were incredibly valuable. The HoRT will take this information and use it to inform the draft strategy. The team meeting also gave the opportunity for the team to hear more about the</p>

## Performance Reporting Report – Progress against Priority Indicators/ Projects / Work Programmes

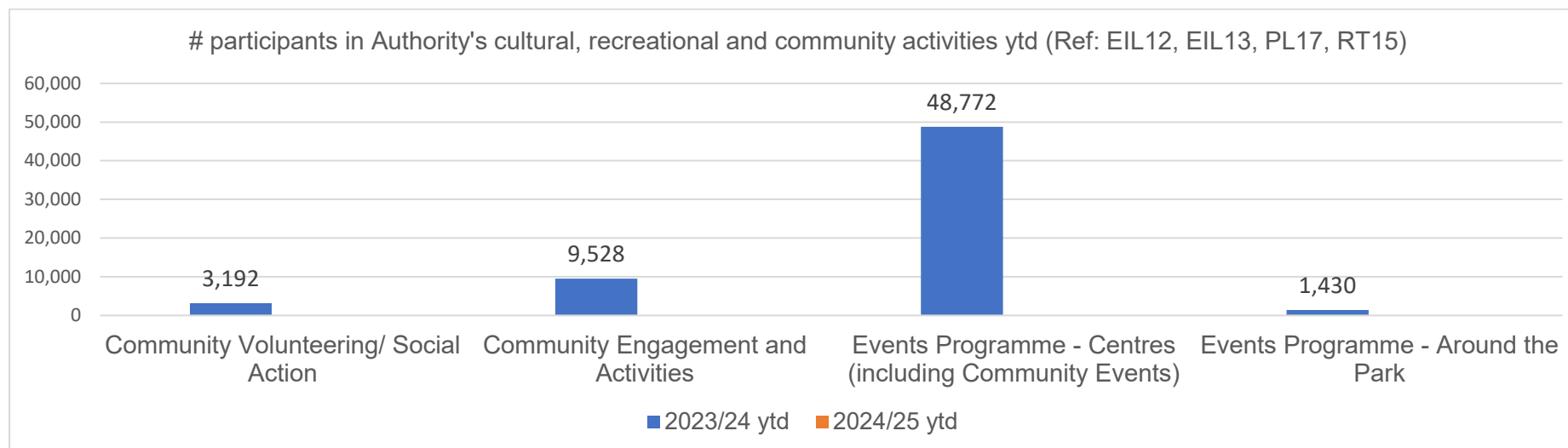
					NP management plan and how the strategy would fit into wider strategies within the Park.
RT15	Review PCNPA Activities and Events programmes, creating an agreed approach to events programming following PCNPA Regenerative Tourism principles	Green	Green	→	<b>Progress Status:</b> In Progress/ On Track All Regenerative Tourism team staff met on 4th March for contribution towards putting practical suggestions of how their activities can help towards meeting targets. This not only brought some interesting suggestions to light but also helped team building and ownership of staff in their role
RT15	Review role of Summer Rangers.	Green	Green	→	<b>Progress Status:</b> Complete/ On Track The Summer Ranger role has been reviewed as part of the Regenerative Tourism team's development plan and assigned a new job description to align with the Regenerative Tourism team's objectives. The role will be focussed on people engagement around the park with the ability to generate income from activities provided as well as educating and advising on enjoying the National Park safely. Seasonal Ranger job advert was posted on March 19th with a closure date of 9th April. We are on target to recruit a ranger from mid May.
RT16	Internal Recreation Management Group Activities to support and deliver effective recreation management in the Park	Green	Green	→	<b>Progress Status:</b> In Progress/ On Track The Internal Recreation Group is currently contributing to a range of pre-season multi-agency meetings (many led by other organisations) to ensure that we can meet our statutory duties to conserve and enhance the NP whilst supporting opportunities for enjoyment and understanding of the Park's special qualities. In particular, we are working closely with PCF to review the outcomes to be delivered through PCNPA's support to PCF during the 2024/25 financial year which we hope to present

## Performance Reporting Report – Progress against Priority Indicators/ Projects / Work Programmes

					in more detail at a future Operational Review Committee meeting.
CM28	Review and explore the potential to deliver the Wonder Filled Coast Brand Ambassador Scheme, aimed at promoting and championing sustainable tourism across the tourism industry.	Green	Green	→	<b>Progress Status:</b> In Progress/ On Hold In light of capacity issues and the likely cost of implementing the scheme, work on the viability of the scheme will be paused until the budget scenario planning exercise has been completed.

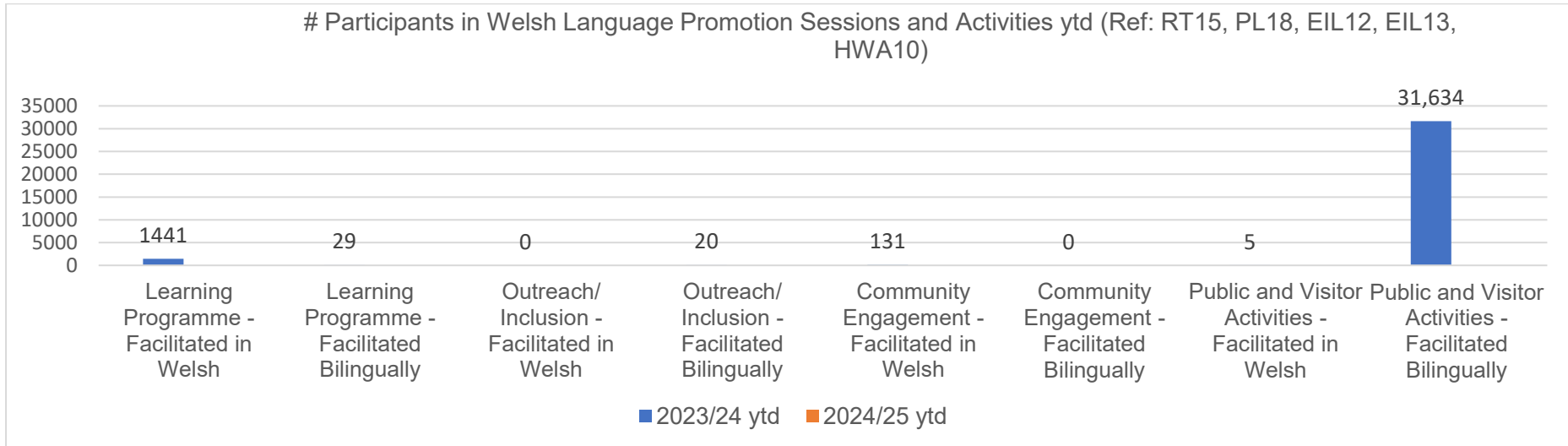
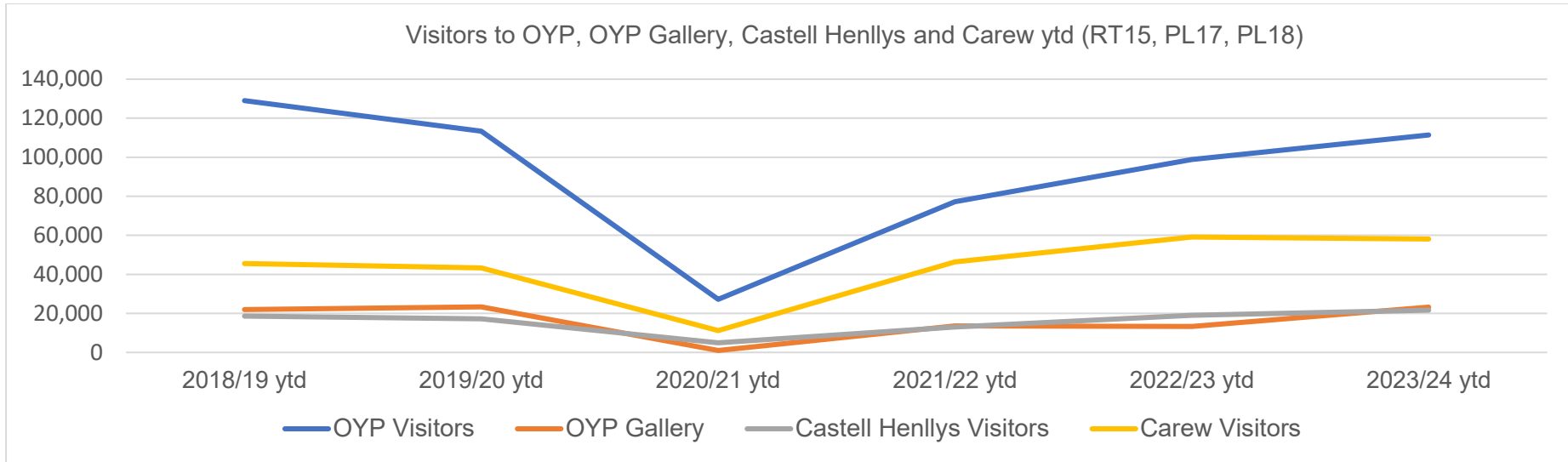
### 11. Evidence of supporting Welsh language, cultural, recreational and community activities

DP Ref	Indicator	Previous Year Ytd: Q4 2022/23	Current Year Ytd: Q4 2023/24	Trend	Comment
RT15	% attendees rate our events excellent/good ytd	100	100	→	





## Performance Reporting Report – Progress against Priority Indicators/ Projects / Work Programmes



## Performance Reporting Report – Progress against Priority Indicators/ Projects / Work Programmes

DP Ref	Internal Development Priority Activity 2023/24	RAG Previous Period: Feb 2023/24	RAG Current Period: March 2023/24	Trend	Progress Commentary
PL18	Deliver a programme of opportunities across our centres, events and outreach work supporting people to use Welsh and develop their Welsh Language skills.	Green	Green	N/A	<b>Progress Status:</b> In Progress / On Track The visitor centres continue to offer varied opportunities for the promotion and use of the Welsh language, within their daily operations, events & education programmes.
PL19	Delivery of Annual Archaeology Day	Green	Green	→	<b>Progress Status:</b> In Progress/ On Track In November 2023 the Annual Archaeology Day took place with over 180 people attending. During March, there was no activity. The initial planning meeting for 2024 was postponed until April due to unforeseen circumstances. The delay of this meeting does not impact on the planning schedule or delivery of this event.

### Connection – PNCPA Impact Case Study

#### Events for Wales Dark Skies Week

##### What issue was addressed:

The events looked at the following areas:

- Light pollution – addressed how modern living has increased light pollution, having an impact on habitats, wildlife and wellbeing. Light pollution has decreased our ability to see the sky at night as our ancestors would have seen it.
- The importance of darkness for wildlife - The natural world doesn't stop communicating at night. Certain species needs darkness to communicate through biofluorescence.

##### What was achieved:

## Performance Reporting Report – Progress against Priority Indicators/ Projects / Work Programmes

Two events held during Wales Dark Sky week. These events were primarily run to provide opportunities for attendees to safely enjoy activities at night designed to highlight the importance of dark skies to the natural world and our own wellbeing.:

- The Wonders of the Night Sky at Castell Henllys. The event was fully booked (40 attendees) with a Return of investment – 2.2:1. Night sky and light pollution - Demonstrated to attendees, even in this remote area of Pembrokeshire, lights from towns many miles away can still have an effect on the night sky. Advice on reducing light pollution and the benefits this can have to wildlife and our own enjoyment of dark skies. Demonstrated how our ancestors made sense of the stars through storytelling followed by a stargazing activity.
- Biofluorescent Night Walk at Pengelli Wood. The event was fully booked (15 attendees) with a Return of investment – 1.3:1. The importance of darkness for wildlife – An event where participants were given the ability to see how wildlife behaves at night using UV light. Under this light wavelength the natural world transforms into a mass of colour which is part of how many plants and animals communicate. Attendees on the event were able to see for themselves the importance of darkness to these species.

**Those involved:** PCNPA Staff and Teams: Activities and Events Manager (Organiser), Castell Henllys VSM and Supervisor (Hosts), Dark Sky Officer (Budget provider and support for both events), North Ranger (Support for Biofluorescent Walk) and Communications officer (Marketing and promotion for both events - press release and social media)

External: Dark Skies Storyteller (Wonders of the Night Sky) and Reveal Nature – Biofluorescent Walk leader

**Timescale:** Two nights during Wales Dark Sky Week (9th – 18th February 2024)

**Feedback/ Longer Term Impact:** Due to the success of the uptake for these events, the Activities and Events Manager and Dark Sky officer are keen to facilitate something similar for the same week next year. There is the possibility of increasing the number of events as both events were fully booked with more demand than spaces. Both events were profitable and given the high demand, there is potential to increase the ticket charge for similar future events.

### 12. Evidence of working with National Park communities to better understand and support local priorities

DP Ref	Internal Development Priority Activity 2023/24	RAG Previous Period: Feb 2023/24	RAG Current Period: March 2023/24	Trend	Progress Commentary
EIL13	Delivery of Next Generation and Youth Committee programmes	Green	Green	→	<b>Progress Status:</b> In Progress/ On Track In March Bannau Brycheiniog - Brecon Beacons - National Park Youth Wardens hosted the joint

## Performance Reporting Report – Progress against Priority Indicators/ Projects / Work Programmes

					Next Gen/BBNPA Youth Wardens Residential partly funded through a grant via NPUK from Amex aimed at developing the skills of the young people involved. In addition to many fun discussions on youth voice and the Youth Manifesto, activities included a beautiful walk through waterfall country, caving, meeting the Bannau Brycheiniog Curlew Officer and a trip to the impressive BBNPA Visitor Centre.
EIL13	Delivery of Volunteer Forum reflecting the diversity of volunteers.	Green	Green	→	<b>Progress Status:</b> In Progress/ On Track Forum meeting held in March. Included a presentation about NP management plan and encouraging volunteers to get involved in the consultation. Forum currently has strong representation from pathways, other groups not always represented depending on delegate availability. We will continue to look at additional ways of encouraging volunteers to be involved, potentially through focus groups for specific areas of work.
NR2	NPMP Development – Engagement activities to define what nature recovery means and what this looks like for the Park	Green	Green	→	<b>Progress Status:</b> In Progress/ On Track Options are being explored.
D6	NPMP Development – Engagement activities with partners including business’ with focus on visitor economy sector, 3rd sector and PSB to support decarbonisation of National Park.	Green	Amber	↓	<b>Progress Status:</b> In Progress/ Behind Review of draft Management Plan to include actions that align to working across the National Park to support decarbonisation actions. Meeting arranged with PCC officer to look at future opportunities to deliver this work collaboratively.
EIL13	NPMP Development - Explore potential to develop community level National Park plans.	Green	Green	→	<b>Progress Status:</b> In Progress/ On Track Work is still underway to complete two pilot community nature plans for Broad Haven and Carew which, once complete can be used as template plans for other areas if there is potential

## Performance Reporting Report – Progress against Priority Indicators/ Projects / Work Programmes

					to do so. Progress is difficult to timetable because the plans involve bringing communities together to collaborate so pace is determined by the community.
RT16	NPMP Development - Engagement with partners to identify communities which would benefit from regenerative tourism approaches.	Green	Green	→	<b>Progress Status:</b> In Progress/ On Track The Conservation and Marine Policy Officer presented at the RT team meeting in early March, giving an overview of the plan and the process for review. This was part of a wider meeting which looked at the RT draft strategy and was important to view the department's draft strategy in context with wider NP strategies. The HoRT met with colleagues in the planning policy department and discussed current work and priorities within the RT team to help inform the management plan. The HoRT continues to represent the NP on the Outdoor Charter Steering Group and attended a pre-season charter meeting in March.
EIL13	NPMP Development - Using National Park Management Plan engagement process to test and further develop our engagement approaches, including new digital tools.	Green	Green	→	<b>Progress Status:</b> In Progress/ On Track Online engagement with Pembrokeshire Nature Partnership 11th March, Volunteer Forum 18th March, Friends of Pembrokeshire Coast National Park 19th March. Special qualities online survey closes 19th April.
EIL13	NPMP Development - Develop winter community engagement tour of communities using information van.	Green	Green	→	<b>Progress Status:</b> In Progress/ On Track Consideration is being made as to whether this work could form part of a new Experiences for All project. External funding would need to support this work so currently we are developing ideas for this.
PL19	NPMP Development - Collaborating with others on Community Archaeology excavations and projects in the Park.	Green	Green	→	<b>Progress Status:</b> In Progress/ On Track During March, a draft of the material produced by Dyfed Archaeology in preparation for the lidar portal was received for review by the Community Archaeologist. Also, the Community Archaeologist

## Performance Reporting Report – Progress against Priority Indicators/ Projects / Work Programmes

					continues to work with PCC and PLANED in preparation for the Pembrokeshire Heritage Day in May at Scolton Manor.
PL17	NPMP Development: Partnership Framework is reviewed, updated and implemented to enable the Authority to achieve its key aims and objectives through partnership.	Green	Green	➔	<b>Progress Status:</b> In Progress/ On Track Review to be undertaken to support development of new NPMP.